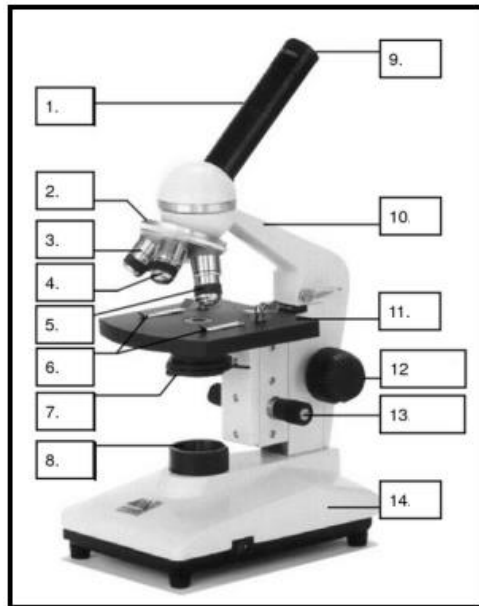


Year 11 Biology
Worksheet 1 – April, 2021

Microscopes

1. a. Label the diagram given below of the microscope:



- b. Give the functions of the following parts of the microscope:

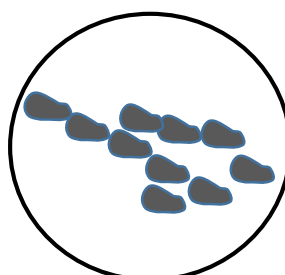
Part	Function
5	
7	
9	
12	
13	

2. Compound microscopes use two lenses; the one at the top that you look through and the smaller lenses by the slide. Most compound microscopes have several different power lenses on the rotating nosepiece.

Calculate total magnification of a sample using a lens (at the top that you look through) of 10X and a high power lens of 40x.

3. Rearrange the given steps in the proper order of preparing a wet mount. Give a reason for the parts 'a' and 'e'.
- At an angle, place one side of the cover slip against the slide making contact with outer edge of the liquid drop.
 - Place a drop of fluid in the center of the slide.
 - Remove excess water with the paper towel.
 - Position sample on liquid, using tweezers.
 - Lower the cover slowly, avoiding air bubbles.

4. A student sees the following algal cells under the microscope at 10x magnification. The field of view diameter at 10x magnification is 2mm. Estimate the size of one algal cell in microns.



The End